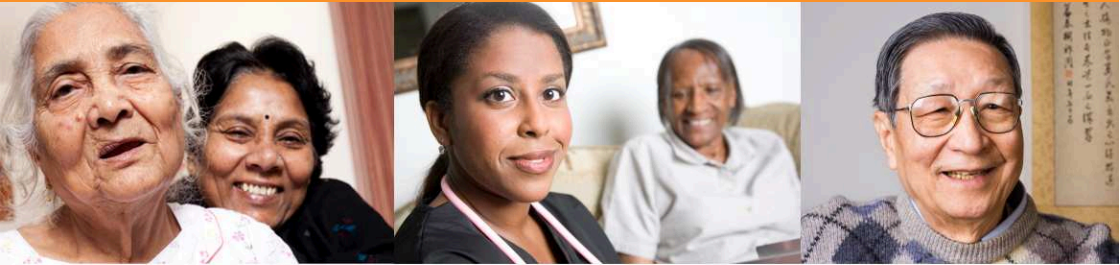


NEW  
Service!

# BME Carer's Support

In Rushcliffe, Gedling and Broxtowe



“

Are you a member of a  
Black, Asian or Minority  
Ethnic Community?

Do you care for a member  
of your family, a neighbour  
or relative who is over 18  
and has a long term illness,  
disability or is frail?

Do you need some advice or support?

”

If you answered **YES** then please contact **Seema Fakey**  
BME Carer Support Worker  
Rushcliffe Community & Voluntary Service

Call **0115 9816988** or email **[sfakey@rushcliffecvs.org.uk](mailto:sfakey@rushcliffecvs.org.uk)**  
Rushcliffe Community & Voluntary Service, Park Lodge, Bridgford Rd,  
West Bridgford, Nottingham, NG2 6AT